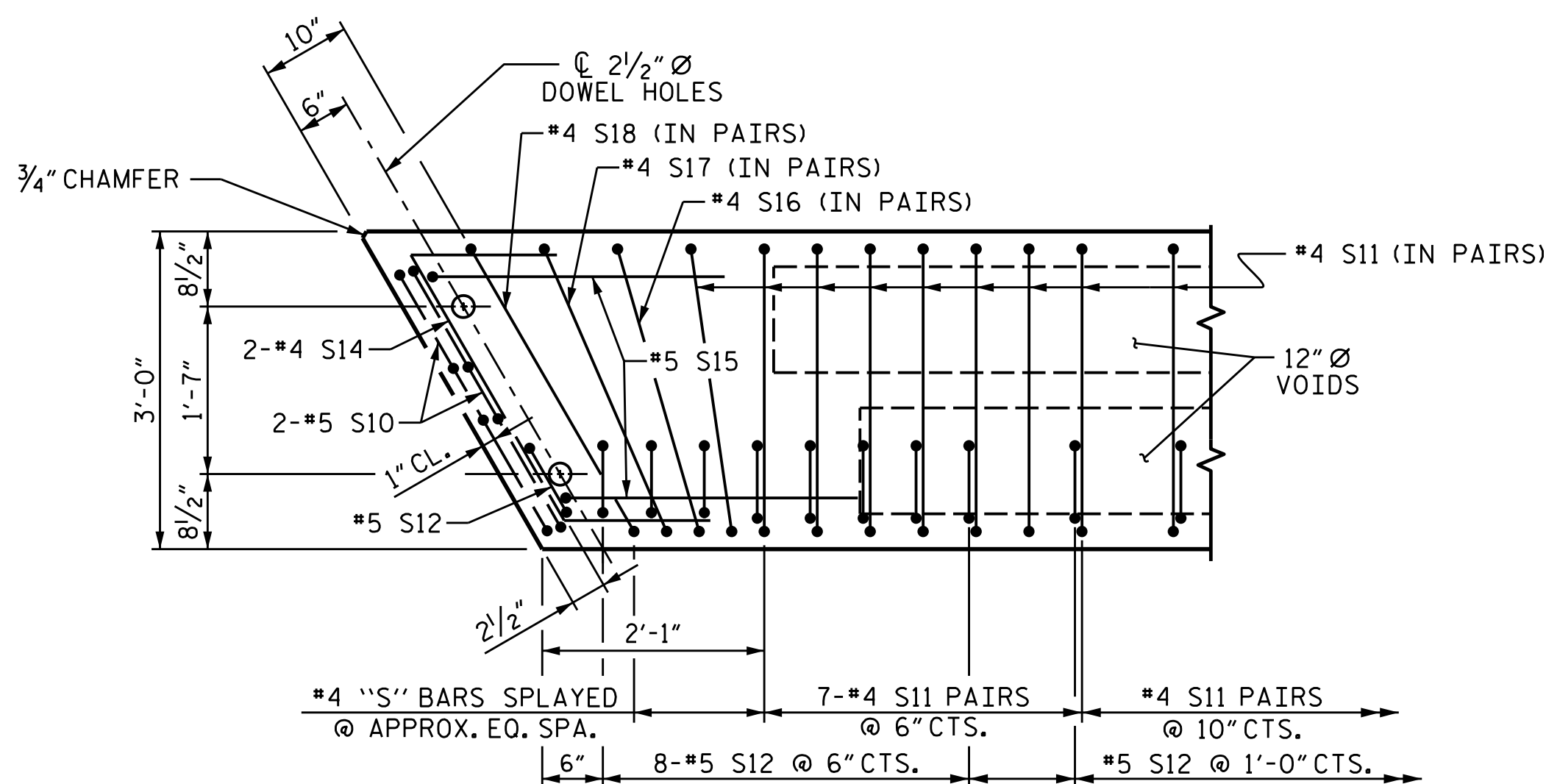
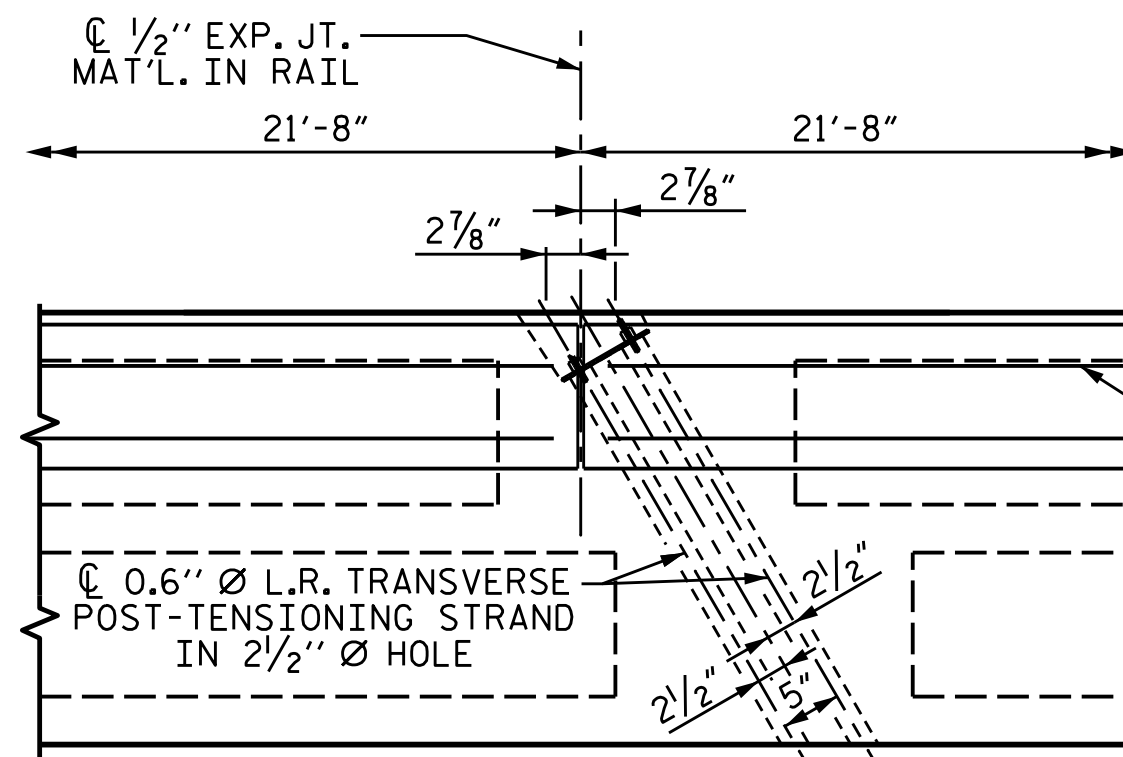


PLAN OF UNIT



DETAIL "A"

(SIMILAR EACH END OF UNIT)  
NOTE: EXTERIOR UNIT SHOWN - INTERIOR  
UNIT SIMILAR EXCEPT OMIT #5 S12 BARS.



DETAIL "B"

\*4 S11 BARS MAY BE SHIFTED AS NECESSARY  
TO MAINTAIN 1" CLEAR TO GROUTED RECESS AND  
2 1/2" Ø TRANSVERSE POST-TENSIONING STRAND HOLES

PROJECT NO. HB-0030

MACON COUNTY

STATION: 16+10.49 -L-

SHEET 2 OF 3

STATE OF NORTH CAROLINA  
DEPARTMENT OF TRANSPORTATION  
RALEIGH

SPAN B  
PLAN OF 65'-0" UNIT  
30'-10" CLEAR ROADWAY  
60° SKEW

REVISIONS						SHEET NO. S-14 TOTAL SHEETS 26
NO.	BY:	DATE:	NO.	BY:	DATE:	
1			3			
2			4			

DRAWN BY : G. DWIGHT LOFLIN DATE : 01-2025  
CHECKED BY : LOGAN C. YARBROUGH DATE : 01-2025  
DESIGN ENGINEER OF RECORD: LOGAN C. YARBROUGH DATE : 08-2025

**DOCUMENT NOT CONSIDERED FINAL  
UNLESS ALL SIGNATURES COMPLETED**

**DRMP**

8210 UNIVERSITY EXECUTIVE  
PARK DRIVE SUITE 220,  
CHARLOTTE, NC 28262  
(704) 549-4260

NC LICENSE NO. F-1524



DRMP JOB NUMBER: 20-0464.031

STD. NO. 24PCS\_33\_60S\_65L